



# BLS budget and initiatives

John M. Galvin  
Associate Commissioner for Employment Statistics  
Bureau of Labor Statistics

[Galvin.John@bls.gov](mailto:Galvin.John@bls.gov)

October 11, 2006

# BLS Budget for FY 2007

- House & Senate bills at Administration request, which includes
  - CPI initiative \$8,000
  - “Built-In” changes: \$16,960
- House adds \$2m for American Time Use Survey
- DOL currently funded by Continuing Resolution at FY 2006 level
- Still uncertainty about 2007 appropriation

# Across-the-board cuts to BLS budget

Year	Cut	Permanent?
2000	0.38%	No
2001	0.22%	No
2002	No cut	--
2003	0.65%	No
2004	0.59%	No
2005	0.80%	Yes
2006	1.00%	Yes
2007	?	?



# State funding for FY 2007

- “Built-in” increases:
  - State operations \$1,360
  - Quarterly Census of Employment and Wages (QCEW) workload \$ 600
- Current Employment Statistics (CES)
  - State and area operations restructuring: centralize data collection (\$3,000)



# CES restructuring beyond 2007

- FY 2008: \$1,500 reduction in State funding for CES
  - Complete centralization of data collection
- FY 2008 – FY 2009: target is further reduction of \$3,800 - \$4,800 in State and area operations funding



# Current Employment Statistics (CES) initiatives--1

- Implement sum-of-States controls in State and area estimation
- Produce hours and regular earnings data for all employees
  - Produce gross monthly earnings data for all employees
- Implement sample reallocation across States



# CES initiatives--2

- Advance plan to integrate CES and Quarterly Census of Employment and Wages (QCEW) data by developing:
  - Common scope and definition of employment and gross monthly earnings
  - Options for integrated micro data editing
  - Approaches to quarterly benchmarking and improving the QCEW as a time series
- Validate the preliminary March 2006 benchmark
  - 810,000 (0.6%)

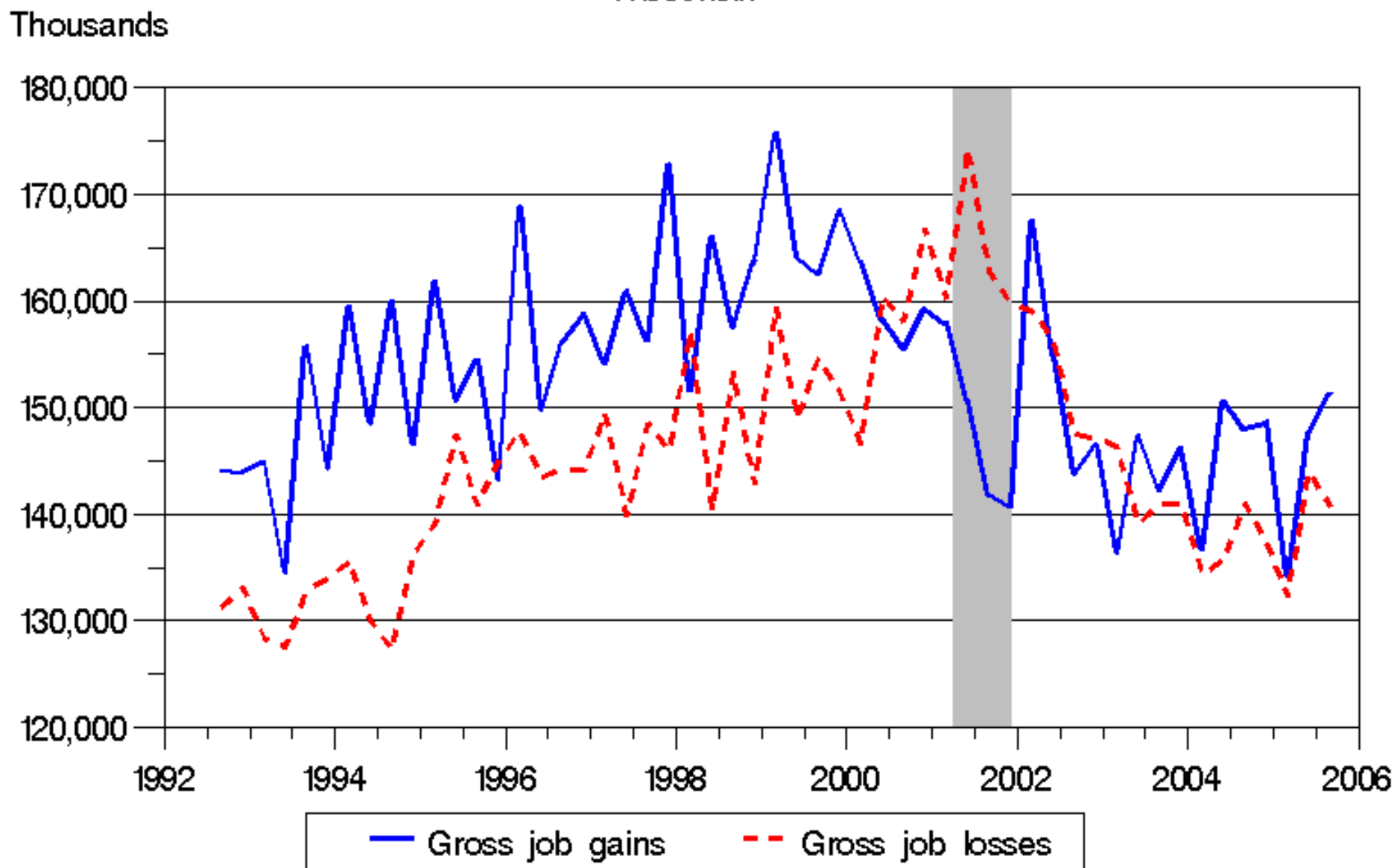


# Quarterly Census of Employment and Wages (QCEW) initiatives

- Publish Business Employment Dynamics (BED) data for States
- Expand data available on BLS web site
  - From 330,000 to 14.5 million data points
- Implement NAICS 2007 revision
- With CES
  - CES/QCEW integration
  - March 2006 benchmark



Chart 1. Private sector gross job gains and gross job losses, seasonally adjusted  
September 1992 – September 2005  
Wisconsin



Note: Shaded area represents recession period.

# Occupational Employment Statistics (OES) initiatives

- Standard Occupational Classification system revision
- Pilot response campaign project—preliminary results



# Occupational Employment Statistics (OES) initiatives

- Integration with BLS National Compensation Survey (NCS); action areas for 2007
  - Reconcile concepts
  - Integrate survey design
  - Study modeling to extend outputs
- Offshoring studies recommend OES time series data
  - National Academy of Public Administration (NAPA)
  - Massachusetts Institute of Technology



# Local Area Unemployment Statistics (LAUS) initiatives

- Errors in LAUS estimates for August 2006
  - Impact greatest in West South Central States
  - Errors traced to BLS processing error
  - BLS will strengthen quality assurance
- Integration of national and State systems
  - Parallel testing in 2007
  - Will streamline processing for BLS and simplify interstate estimation for States



# Mass Layoff Statistics initiatives

- January 2007 implementation:
  - Structured interview script
  - Collection of business function of extended mass layoff
  - Reporting of all initial claims

