



# **Base Realignment and Closure (BRAC 2005)**

## **Potential Impact on the Public Workforce System**

**Luis Macias, Director  
Workforce Development Division  
Texas Workforce Commission**

# BRAC Impact on Texas

- The Base Realignment and Closure (BRAC 2005) list released on May 13, 2005 impacted Texas as follows:
  - 15 - Closures
  - 6 – Realignments
  - 7 – Gaining facilities
  - 1 – Close/Realign



# BRAC Impact on Texas

- **A total of 29 military installations are impacted in one way or another. 21 are recommended for realignment or closure**
- **Of the 21 recommended for realignment or closure, 10 are Army National Guard Reserve Centers spread throughout the state. These are expected to have minimal civilian job losses.**
- **We have identified 9 installations that have potentially large number of civilian job losses. These 9 installations are located in 4 Workforce Development Board areas.**

# BRAC Impact on Texas

- **San Antonio or the Alamo WDB - 9,204**  
**(direct and indirect job losses)**
  - **Brooks City Base - 4,427**
  - **Defense Finance and Accounting Service – 670**
  - **Lackland AFB – 3,641 direct and indirect job losses**  
*(realignment)*

# BRAC Impact on Texas

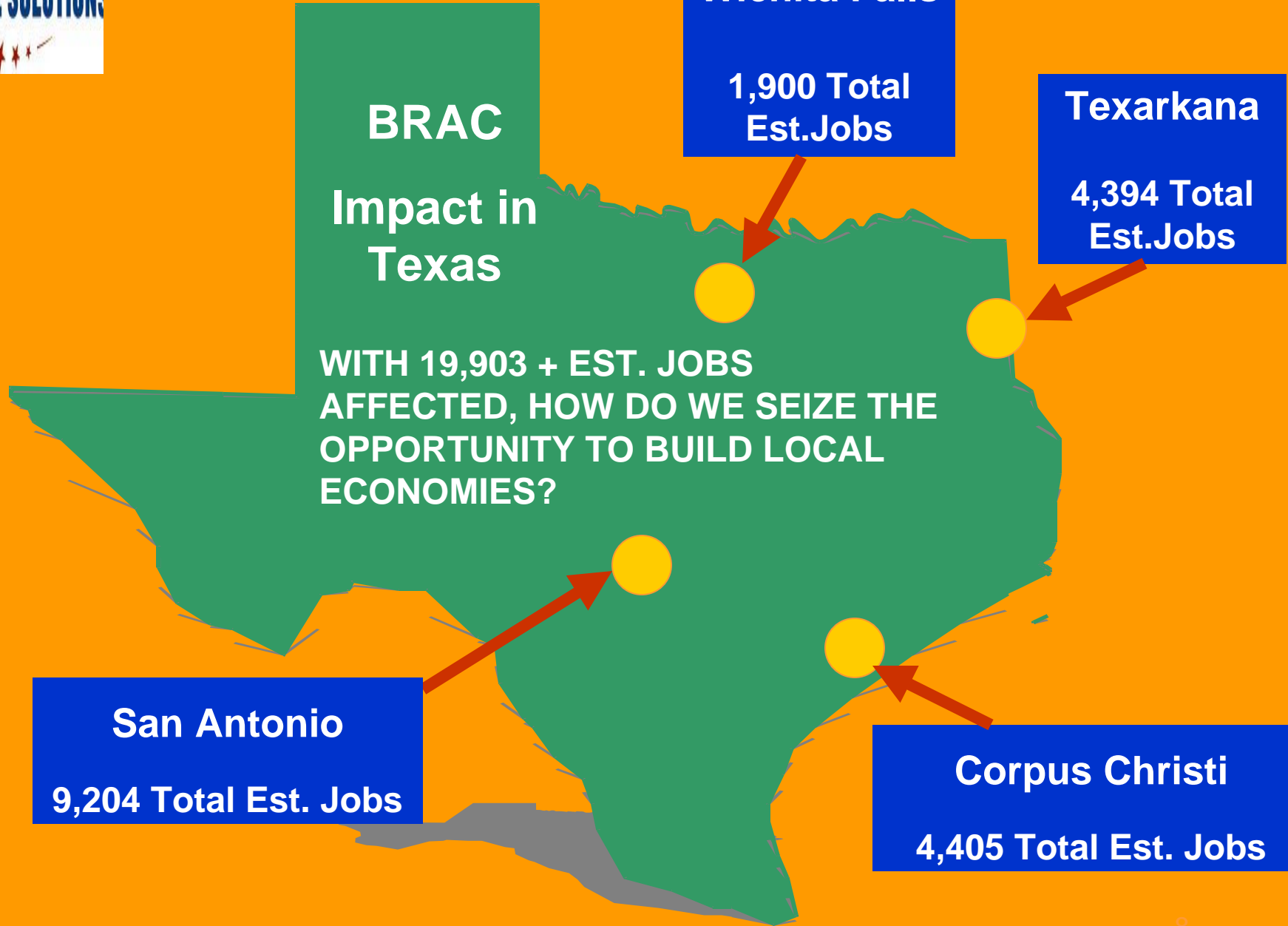
- **Corpus Christi or Coastal Bend - 4,405  
(direct and indirect job losses)**
  - **Naval Station Ingleside – 2,899**
  - **Corpus Christi Army Depot – 224  
(realignment)**
  - **Naval Air Station Corpus Christi – 1,282  
(realignment)**

# BRAC Impact on Texas

- **Texarkana or North East Texas WDB - 4,394  
(direct and indirect job losses)**
  - Red River Army Depot – 4,167
  - Lonestar Army Ammunition Plant – 227

# BRAC Impact on Texas

- **Wichita Falls - North Texas WDB – 1,900(direct and indirect job losses)**
  - **Sheppard Air Force Base - 1,900 (*realignment*)**





# Texas' BRAC Response

- **Assist Communities to assess the impact of the closure or realignment and to begin planning for the future.**
- **On May 24, 2005 – the Department of Labor (DOL) announced the availability of National Emergency Grant funds to support Phase 1 of the state and local planning process.**
- **We requested \$235,000 or about \$50,000 each for the 4 Boards and \$35,000 for unanticipated local needs and state administration.**



# Texas' BRAC Response

- Local Workforce Boards are utilizing the National Emergency Grant fund to:
  - develop locally based comprehensive strategic plans
  - involve stakeholders from economic development, education, and workforce systems.
  - lay the foundation for direct service delivery activities.



# Texas' BRAC Response

- Our view is that this BRAC round is an opportunity for the Texas Workforce System to actively participate in strategies to:
  - retain skilled workers,
  - foster business growth, and
  - create economic revitalization.

# Kelly USA Story

## The Kelly USA Story:

- Formerly known as Kelly Air Force Base - San Antonio, Texas
- Recommended for closure in BRAC 1995
- 13,000 Workers impacted over 5 years
- Skilled Workers, long tenured, generational



# PRIMARY PARTNERS

- **Base Command**
- **Economic Development Agencies**
- **Colleges & Schools**
- **Small Business Development Centers**
- **United Way, CBOs / FBOs**
- **Private Business (& Consultants)**
- **State & Federal Agencies**
- **Greater Kelly Development Authority**



# THE SOLUTION

- **“Market the Package” of the newly available workforce.**
- **Involve all the partners in marketing the “Package.”**
- **Build on the military legacy.**
- **“Privatize in Place” (PIP).**
- **Involve workers’ families in services.**

# LESSONS LEARNED

- Start early with building partnerships.
- Understand your regional economy.
- Work with colleges & schools to build regional training capacity.
- Be data-driven.
- Document skill sets of the affected workers AND business' skill & training needs.
- Workforce & Economic Development are the same thing.

Questions ??